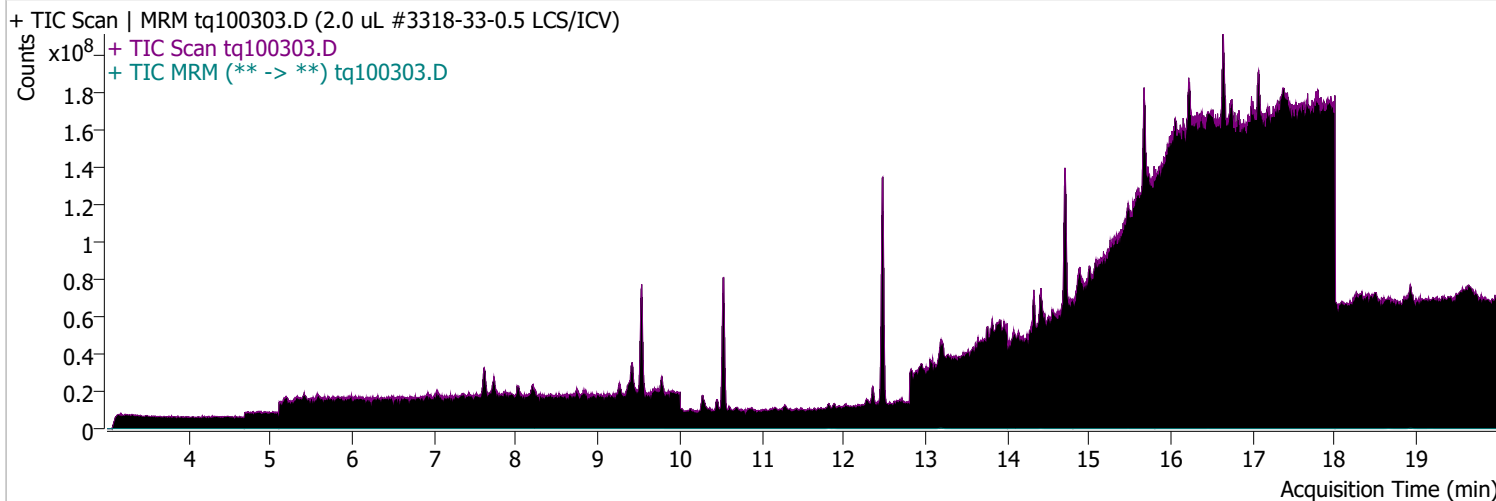


Quantitative Analysis Sample Report

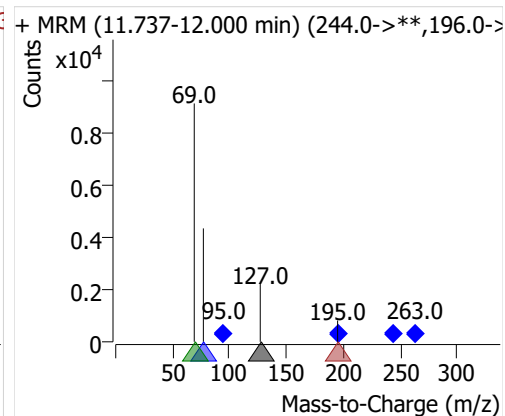
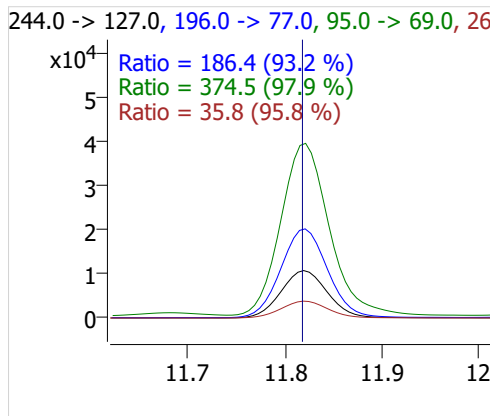
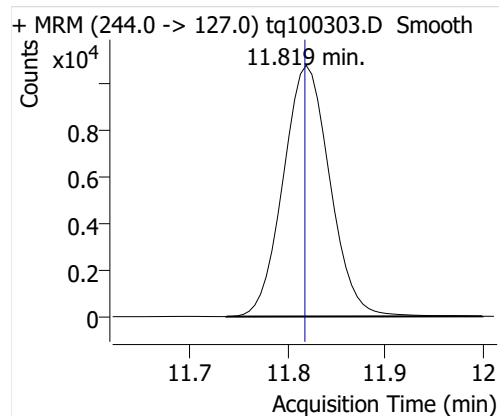
Batch Path D:\MassHunter\GCMS\1\data\30sep22\QuantResults\30sep22.batch.bin
Analysis Time 10/3/2022 10:17 AM **Analyst Name** DESKTOP-R0LAL7E\analyst
Report Time 10/20/2022 2:37:15 PM **Reporter Name** ES-AREA1\US32_USR_INS22923
Last Calib Update 10/3/2022 8:55 AM **Batch State** Processed
Quant Batch Version 10.1 **Quant Report Version** 10.1
Acq. Time 10/3/2022 11:33 AM **Data File** tq100303.D
Sample Type QC **Sample Name** 2.0 uL #3318-33-0.5 LCS/ICV
Dilution 1 **Acq. Method** tq22m0930marks

Sample Chromatogram

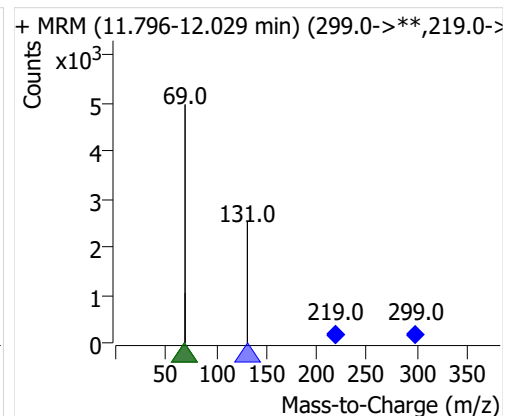
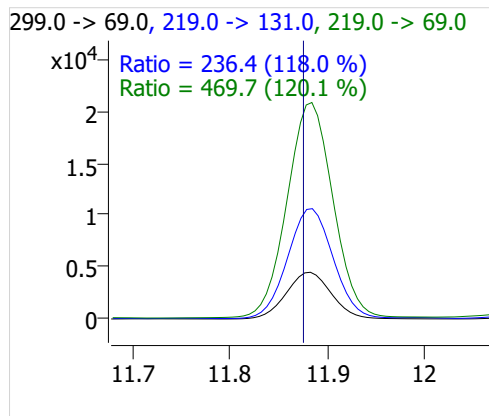
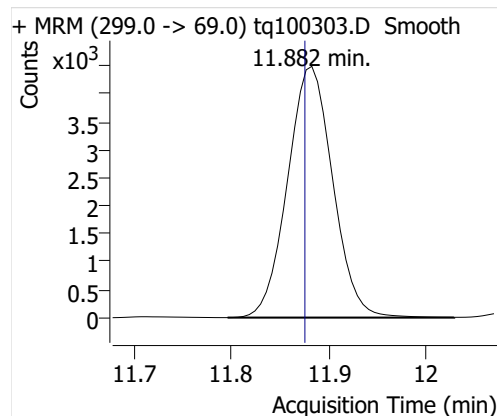


Compound	ISTD	RT	Resp.	ISTD Resp.	Resp. Ratio	Final Conc	Units
4:2 FTOH	6:2 FTOH-C13	11.819	35945	72387	0.4966	0.9034	ng
5:2sFTOH	6:2 FTOH-C13	11.882	14541	72387	0.2009	0.8489	ng
7:2sFTOH	6:2 FTOH-C13	13.183	28382	72387	0.3921	0.8239	ng
6:2 FTOH	6:2 FTOH-C13	13.209	62904	72387	0.8690	0.8606	ng
8:2 FTOH-C13	6:2 FTOH-C13	14.406	24423	72387	0.3374	0.9669	ng
8:2 FTOH	6:2 FTOH-C13	14.407	18754	72387	0.2591	0.9326	ng
10:2 FTOH	6:2 FTOH-C13	15.477	6350	72387	0.0877	0.8395	ng
12:2 FTOH	6:2 FTOH-C13	16.452	22213	72387	0.3069	0.8083	ng
NMeFOSA	6:2 FTOH-C13	18.654	18527	72387	0.2559	0.9125	ng
NEtFOSA	6:2 FTOH-C13	18.924	77943	72387	1.0768	0.8771	ng

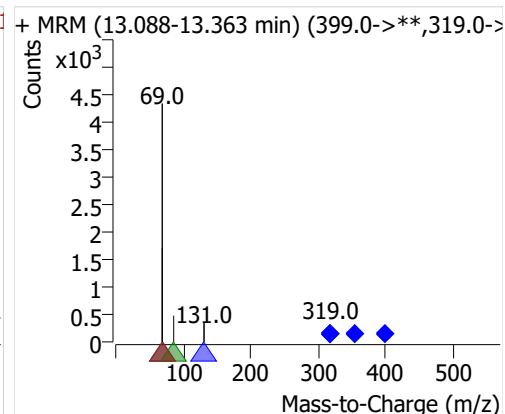
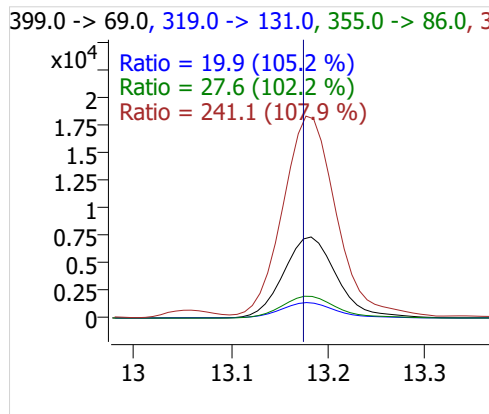
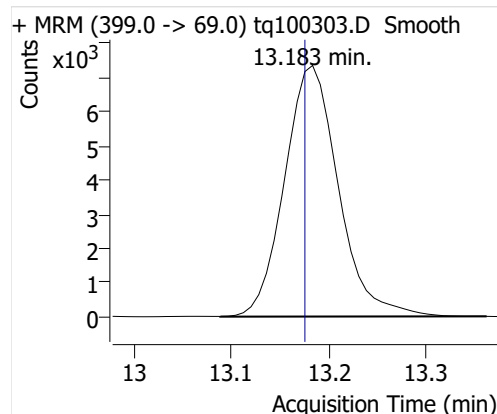
4:2 FTOH



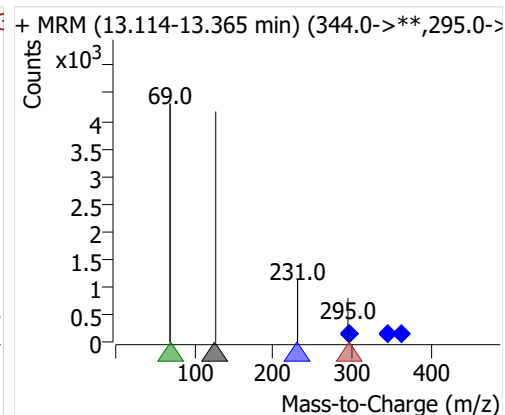
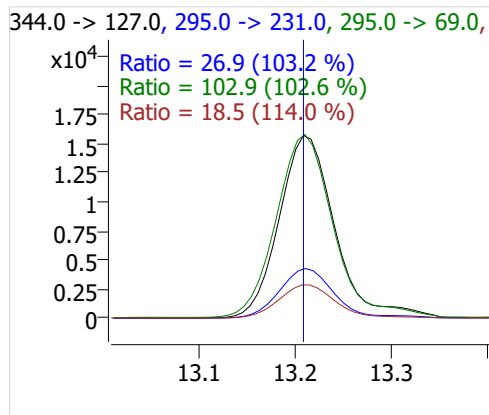
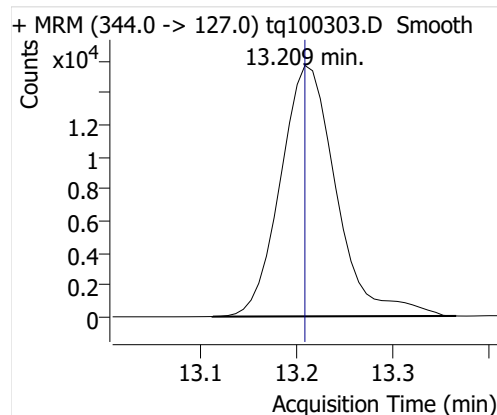
5:2sFTOH



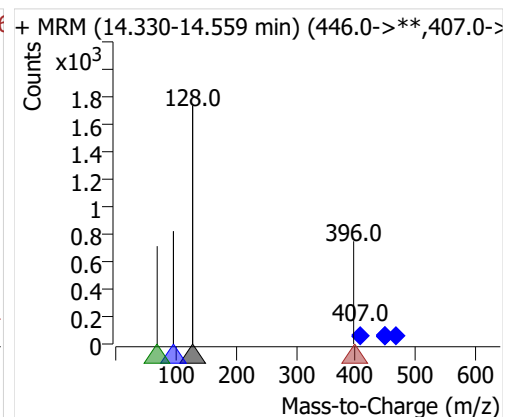
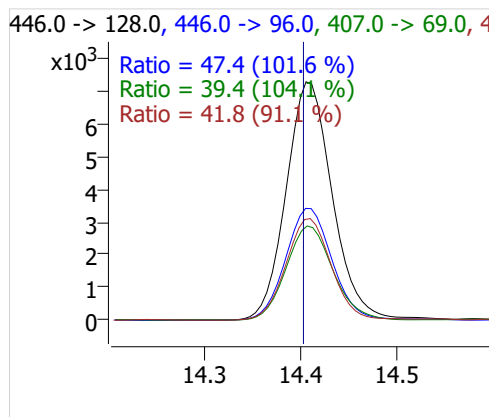
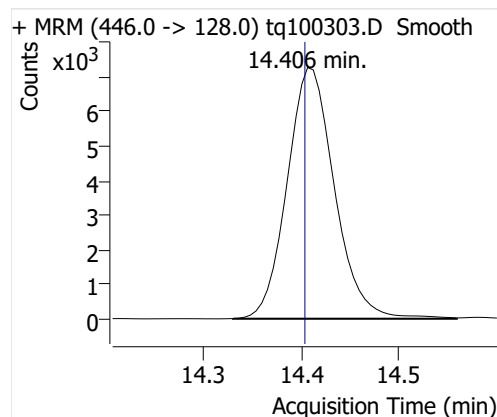
7:2sFTOH



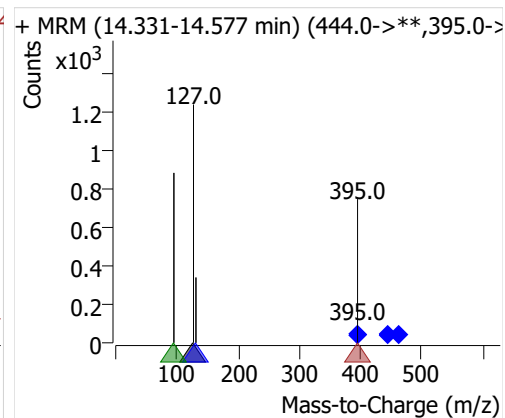
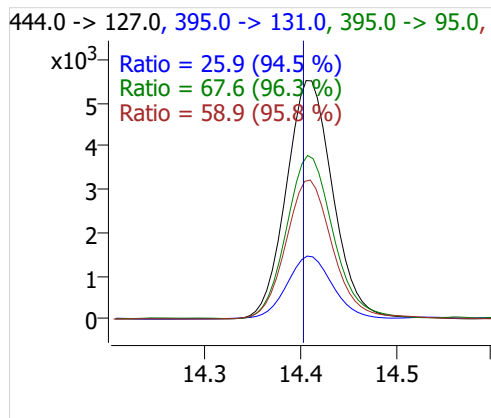
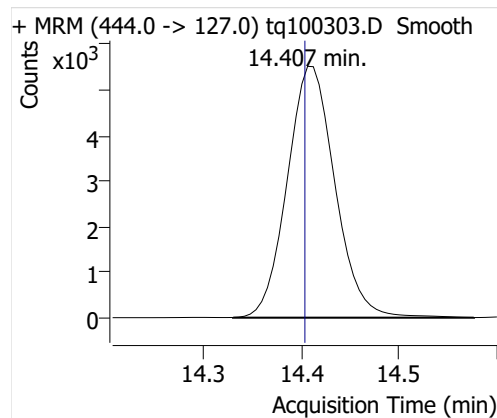
6:2 FTOH



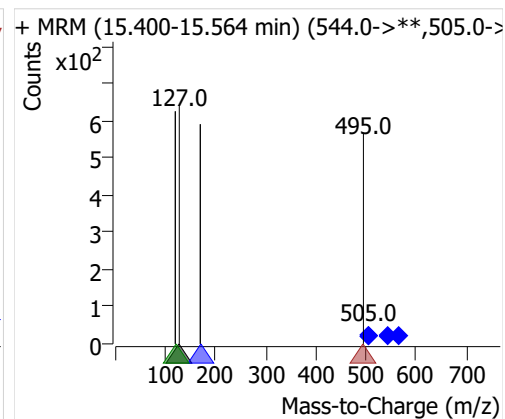
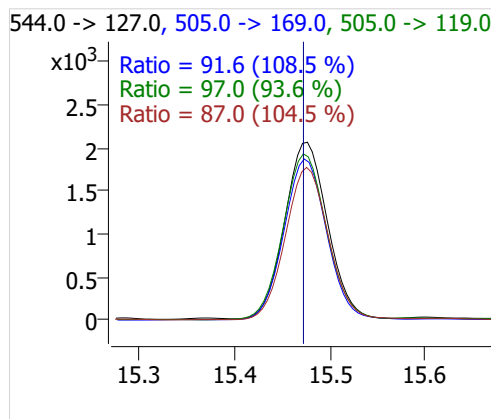
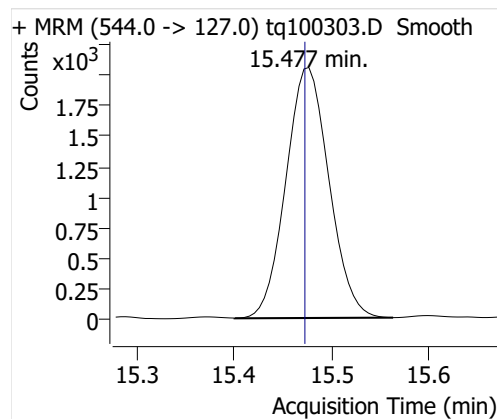
8:2 FTOH-C13



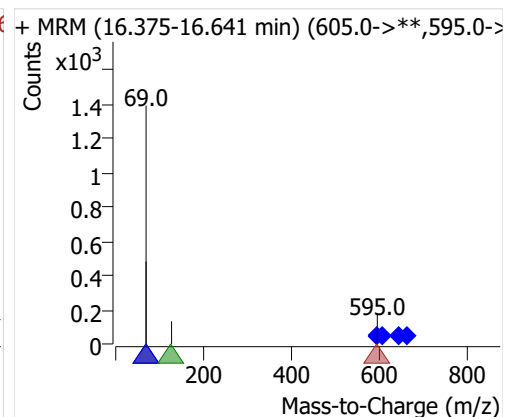
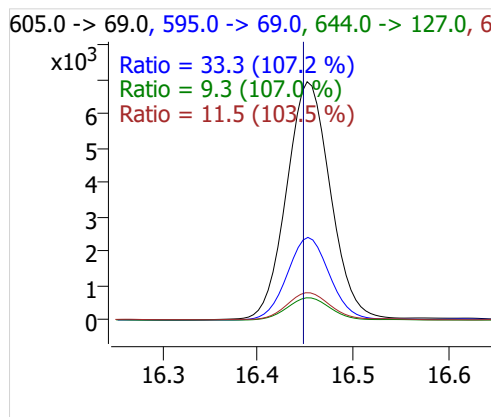
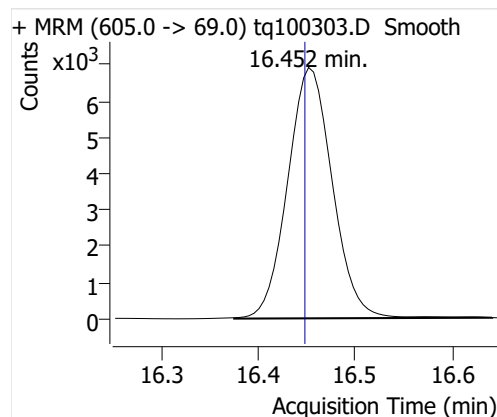
8:2 FTOH



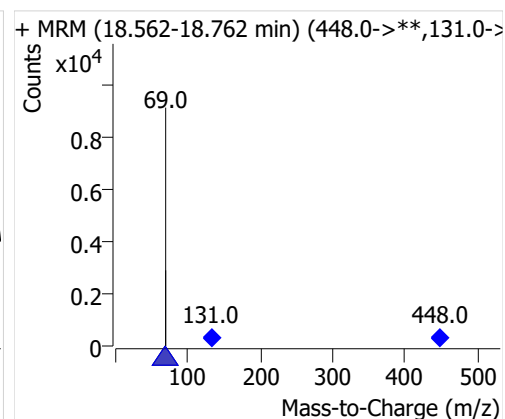
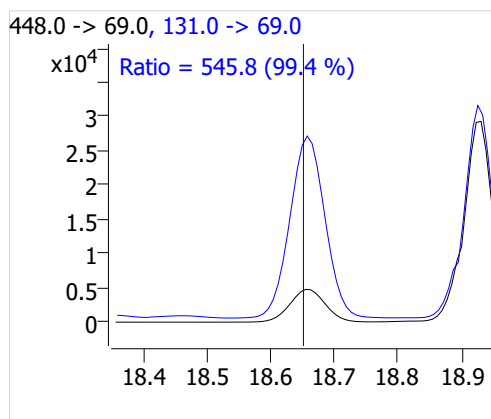
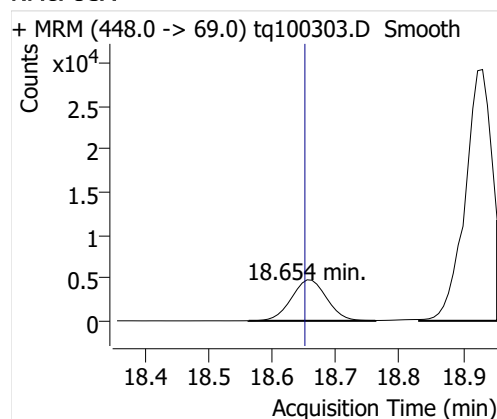
10:2 FTOH



12:2 FTOH



NMeFOSA



NETFOSA

